

UN/EDIFACT

UNITED NATIONS STANDARD MESSAGE (UNSM)

CUSDEC  
CUSTOMS DECLARATION MESSAGE

Innflutningstollskýrsla

Aðflutningsskýrsla

Síðast breytt 1. mars 2013:

Bls. 38. Kóðum SYK og SÆT bætt við gagnalið 6411. Heimild innflytjanda matvæla til að tilgreina þyngd viðbætts sykurs eða sætuefna í vöru, sbr. 1. gr. laga nr. 156/2012.

**CUSDEC:**

Útgefið af: ICEPRO, nefnd um bætt verklag í viðskiptum  
Ríkistollstjóraembættið  
Útgáfunúmer: 1.0  
Dags: Janúar 1999

**EDIFACT-útgáfa:**

Skeyti: CUSDEC  
Útgáfa: D96A  
Staða: 2  
Endurskoðun: 3  
Dags. útgáfu: 95-11  
Útgáfuaðili: UN (Sameinuðu þjóðirnar)

**Efni:**

EFNI: .....	3
INNGANGUR EDIFACT .....	4
UPPBYGGING CUSDEC .....	6
LÍÐIR CUSDEC Í STAFRÓFSRÖÐ .....	11
ÞVOTTASNÚRA.....	12
LÝSING LIÐA .....	17
DÆMI.....	45

## Inngangur EDIFACT

Þessi texti er inngangur að skilgreiningu SP á CUSDEC-skeytinu. Hann er birtur hér óbreyttur.

-----  
For general information on UN standard message types see UN Trade Data Interchange Directory, UNTDID, Part 4, Section 2.6, UN/ECE UNSM General Introduction  
-----

### 0. INTRODUCTION

This specification provides the definition of the Customs declaration message (CUSDEC) to be used in Electronic Data Interchange (EDI) between trading partners involved in administration, commerce and transport.

### 1. SCOPE

#### 1.1 Functional Definition

This Customs Declaration Message (CUSDEC) permits the transfer of data from a declarant to a customs administration for the purpose of meeting legislative and/or operational requirements in respect of the declaration of goods for import, export or transit. The message may also be used, for example :

- to transmit data from an exporter in one country to an importer in another country;
- to transmit consignment data from one customs administration to another;
- to transmit data from a customs authority to other governments agencies and/or interested administrations.
- to transmit data from a declarant to the appropriate data collection agency on the movement of goods between statistical territories.

#### 1.2 Field of Application

This message may be applied for both national and international trade. It is based on universal practice and is not dependent on the type of business or industry.

#### 1.3 Principles

This message incorporates the necessary transport, statistical and customs information. Provision has also been made for the inclusion of appropriate commercial information which may be accepted by customs in lieu of supporting documentation.

The design principles adopted allow for referencing one or more commercial documents pertaining to the same declaration and for the grouping of document lines into a single customs item. A

customs item consists of the grouping of those document lines having the same customs characteristics (e.g. tariff number, declared use, etc). The message correspondingly permits the use of single or multi-packaging concepts and their identification to a customs item.

## 2. REFERENCES

See UNTDID, Part 4, Chapter 2.6 UN/ECE UNSM - General Introduction, Section 1.

## 3. TERMS AND DEFINITIONS

See UNTDID, Part 4, Chapter 2.6 UN/ECE UNSM - General Introduction, Section 2.

## Uppbygging CUSDEC

Hér er sýnd uppbygging CUSDEC-skeytisins í heild.  
Þeir liðir sem ekki eru notaðir, eru skyggðir í þessu yfirliti.

TAG	NAME	S	REPT		
UNH	MESSAGE HEADER	M	1		
BGM	BEGINNING OF MESSAGE	M	1		
CST	CUSTOMS STATUS OF GOODS	C	1		
LOC	PLACE/LOCATION IDENTIFICATION	C	99		
DTM	DATE/TIME/PERIOD	C	15		
GIS	GENERAL INDICATOR	C	25		
FII	FINANCIAL INSTITUTION INFORMATION	C	1		
MEA	MEASUREMENTS	C	5		
EQD	EQUIPMENT DETAILS	C	999		
SEL	SEAL NUMBER	C	999		
	Group 1 - References			C	99
RFF	REFERENCE	M	1		
DTM	DATE/TIME/PERIOD	C	1		
	Group 2 - Package loop			C	10
PAC	PACKAGE	M	1		
	Group 3 - Package identification			C	999
PCI	PACKAGE IDENTIFICATION	M	1		
FTX	FREE TEXT	C	1		
	Group 4 - Details of transport			C	5
TDT	DETAILS OF TRANSPORT	M	1		
TPL	TRANSPORT PLACEMENT	C	1		
	Group 5 - Document loop			C	10
DOC	DOCUMENT/MESSAGE DETAILS	M	1		
DTM	DATE/TIME/PERIOD	C	2		
LOC	PLACE/LOCATION IDENTIFICATION	C	1		
	Group 6 - Name and address loop			C	10
NAD	NAME AND ADDRESS	M	1		
RFF	REFERENCE	C	10		
CTA	CONTACT INFORMATION	C	1		
COM	COMMUNICATION CONTACT	C	5		
	Group 7 - Terms of delivery loop			C	1
TOD	TERMS OF DELIVERY	M	1		
LOC	PLACE/LOCATION IDENTIFICATION	C	2		
FTX	FREE TEXT	C	1		
	Group 8 - Monetary loop			C	25
MOA	MONETARY AMOUNT	M	1		
	Group 9 - Currencies loop			C	1
CUX	CURRENCIES	M	1		
DTM	DATE/TIME/PERIOD	C	1		
<b>DETAIL SECTION -----</b>					
UNS	SECTION CONTROL	M	1		

Group 10 - Documents loop				C	999	
DMS	DOCUMENT/MESSAGE SUMMARY	M	1			
DTM	DATE/TIME/PERIOD	C	1			
MEA	MEASUREMENTS	C	5			
Group 11 - Monetary loop				C	25	
MOA	MONETARY AMOUNT	M	1			
Group 12 - Currencies loop				C	1	
CUX	CURRENCIES	M	1			
DTM	DATE/TIME/PERIOD	C	1			
Group 13 - Terms of delivery loop				C	1	
TOD	TERMS OF DELIVERY	M	1			
LOC	PLACE/LOCATION IDENTIFICATION	C	2			
FTX	FREE TEXT	C	1			
Group 14 - Name and address loop				C	10	
NAD	NAME AND ADDRESS	M	1			
Group 15 - Documents loop				C	10	
DOC	DOCUMENT/MESSAGE DETAILS	M	1			
DTM	DATE/TIME/PERIOD	C	2			
LOC	PLACE/LOCATION IDENTIFICATION	C	1			
Group 16 - Package loop				C	10	
PAC	PACKAGE	M	1			
Group 17 - Package id. loop				C	999	
PCI	PACKAGE IDENTIFICATION	M	1			
FTX	FREE TEXT	C	1			
RFF	REFERENCE	C	1			
Group 18 - Payment terms loop				C	5	
PAT	PAYMENT TERMS BASIS	M	1			
MOA	MONETARY AMOUNT	C	1			
PCD	PERCENTAGE DETAILS	C	1			
FTX	FREE TEXT	C	1			
Group 19 - Allowance/charge loop				C	10	
ALC	ALLOWANCE OR CHARGE	M	1			
RTE	RATE DETAILS	C	1			
MOA	MONETARY AMOUNT	C	1			
PCD	PERCENTAGE DETAILS	C	1			
QTY	QUANTITY	C	1			
Group 20 - Currencies loop				C	1	
CUX	CURRENCIES	M	1			
DTM	DATE/TIME/PERIOD	C	1			
Group 21 - Line item loop				C	9999	
LIN	LINE ITEM	M	1			
PIA	ADDITIONAL PRODUCT ID.	C	1			
QTY	QUANTITY	C	1			
PRI	PRICE DETAILS	C	2			
PCD	PERCENTAGE DETAILS	C	1			
MEA	MEASUREMENTS	C	5			
QVR	QUANTITY VARIANCES	C	5			
MOA	MONETARY AMOUNT	C	15			
NAD	NAME AND ADDRESS	C	10			
GIR	RELATED IDENTIFICATION NUMBERS	C	9999			

Group 22 - Documents loop				C	10	
DOC	DOCUMENT/MESSAGE DETAILS	M	1			
DTM	DATE/TIME/PERIOD	C	2			
Group 23 - Allowance/charge loop				C	10	
ALC	ALLOWANCE OR CHARGE	M	1			
RTE	RATE DETAILS	C	1			
MOA	MONETARY AMOUNT	C	1			
PCD	PERCENTAGE DETAILS	C	1			
QTY	QUANTITY	C	1			
Group 24 - Currencies loop				C	1	
CUX	CURRENCIES	M	1			
DTM	DATE/TIME/PERIOD	C	1			
Group 25 - Terms of delivery loop				C	1	
TOD	TERMS OF DELIVERY	M	1			
LOC	PLACE/LOCATION IDENTIFICATION	C	2			
Group 26 - Payment terms loop				C	5	
PAT	PAYMENT TERMS BASIS	M	1			
MOA	MONETARY AMOUNT	C	1			
PCD	PERCENTAGE DETAILS	C	1			
FTX	FREE TEXT	C	1			
Group 27 - Item description loop				C	5	
IMD	ITEM DESCRIPTION	M	1			
FTX	FREE TEXT	C	1			
Group 28 - Package loop				C	10	
PAC	PACKAGE	M	1			
Group 29 - Package id. loop				C	999	
PCI	PACKAGE IDENTIFICATION	M	1			
FTX	FREE TEXT	C	1			
RFF	REFERENCE	C	1			
Group 30 - Customs status loop				C	9999	
CST	CUSTOMS STATUS OF GOODS	M	1			
FTX	FREE TEXT	C	9			
LOC	PLACE/LOCATION IDENTIFICATION	C	25			
DTM	DATE/TIME/PERIOD	C	5			
MEA	MEASUREMENTS	C	20			
NAD	NAME AND ADDRESS	C	5			
TDT	DETAILS OF TRANSPORT	C	9			
Group 31 - Monetary loop				C	10	
PAC	PACKAGE	M	1			
Group 32 - Package id. loop				C	999	
PCI	PACKAGE IDENTIFICATION	M	1			
FTX	FREE TEXT	C	1			
Group 33 - Monetary loop				C	25	
MOA	MONETARY AMOUNT	M	1			
Group 34 - Currencies loop				C	1	
CUX	CURRENCIES	M	1			
DTM	DATE/TIME/PERIOD	C	1			
Group 35 - Reference loop				C	999	
RFF	REFERENCE	M	1			



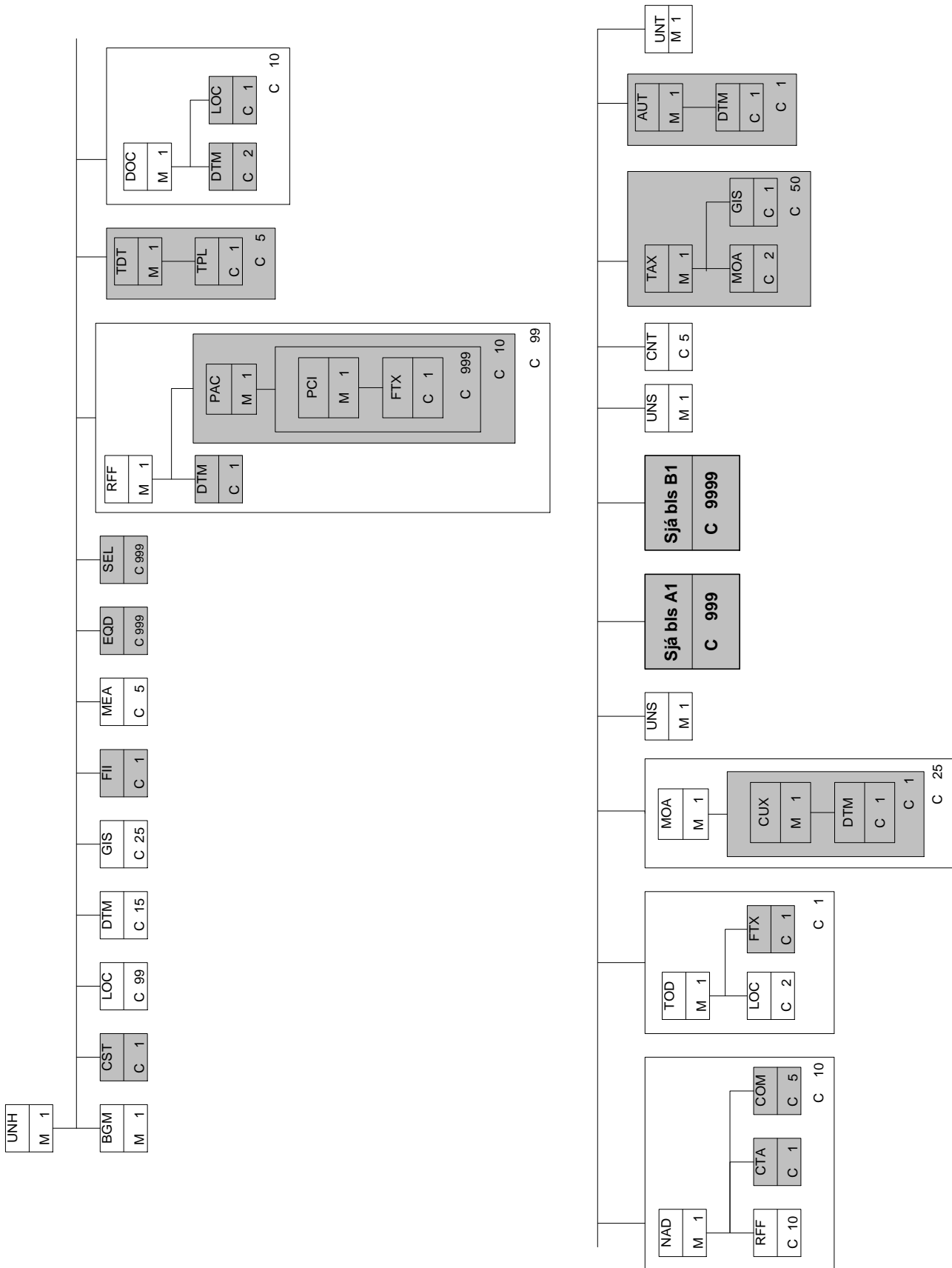
DTM	DATE/TIME/PERIOD	C	1		
GIN	GOODS IDENTITY NUMBER	C	99		
MOA	MONETARY AMOUNT	C	1		
Group 36 - Item description loop				C	1
IMD	ITEM DESCRIPTION	M	1		
FTX	FREE TEXT	C	5		
Group 37 - Documents loop				C	25
DOC	DOCUMENT/MESSAGE DETAILS	M	1		
DTM	DATE/TIME/PERIOD	C	2		
LOC	PLACE/LOCATION IDENTIFICATION	C	1		
NAD	NAME AND ADDRESS	C	5		
Group 38 - Terms of delivery loop				C	1
TOD	TERMS OF DELIVERY	M	1		
LOC	PLACE/LOCATION IDENTIFICATION	C	2		
FTX	FREE TEXT	C	1		
Group 39 - Nature of cargo loop				C	1
GDS	NATURE OF CARGO	M	1		
FTX	FREE TEXT	C	1		
Group 40 - General indicator loop				C	25
GIS	GENERAL INDICATOR	M	1		
PCD	PERCENTAGE DETAILS	C	1		
DTM	DATE/TIME/PERIOD	C	1		
RFF	REFERENCE	C	1		
Group 41 - Duty/tax/fee loop				C	10
TAX	DUTY/TAX/FEE DETAILS	M	1		
MOA	MONETARY AMOUNT	C	2		
GIS	GENERAL INDICATOR	C	1		
Group 42 - Quantity variances loop				C	1
QVR	QUANTITY VARIANCES	M	1		
QTY	QUANTITY	C	1		
Group 43 - References loop				C	1
RFF	REFERENCE	M	1		
DTM	DATE/TIME/PERIOD	C	1		
Group 44 - Related id. numbers loop				C	50
GIR	RELATED IDENTIFICATION NUMBERS	M	1		
GIS	GENERAL INDICATOR	C	10		
NAD	NAME AND ADDRESS	C	1		
MEA	MEASUREMENTS	C	5		
Group 45 - Monetary loop				C	10
MOA	MONETARY AMOUNT	M	1		
Group 46 - Currencies loop				C	1
CUX	CURRENCIES	M	1		
DTM	DATE/TIME/PERIOD	C	1		
Group 47 - Duty/tax/fee loop				C	10
TAX	DUTY/TAX/FEE DETAILS	M	1		
MOA	MONETARY AMOUNT	C	2		
GIS	GENERAL INDICATOR	C	1		
Group 48 - Documents loop				C	5
DOC	DOCUMENT/MESSAGE DETAILS	M	1		
DTM	DATE/TIME/PERIOD	C	2		

LOC	PLACE/LOCATION IDENTIFICATION	C	1		
<b>SUMMARY SECTION -----</b>					
UNS	SECTION CONTROL	M	1		
CNT	CONTROL TOTAL	C	5		
Group 49 - Duty/tax/fee loop					
TAX	DUTY/TAX/FEE DETAILS	M	1	C	50
MOA	MONETARY AMOUNT	C	2		
GIS	GENERAL INDICATOR	C	1		
Group 50 - Authentication					
AUT	AUTHENTICATION	M	1	C	1
DTM	DATE/TIME/PERIOD	C	1		
UNT	MESSAGE TRAILER	M	1		

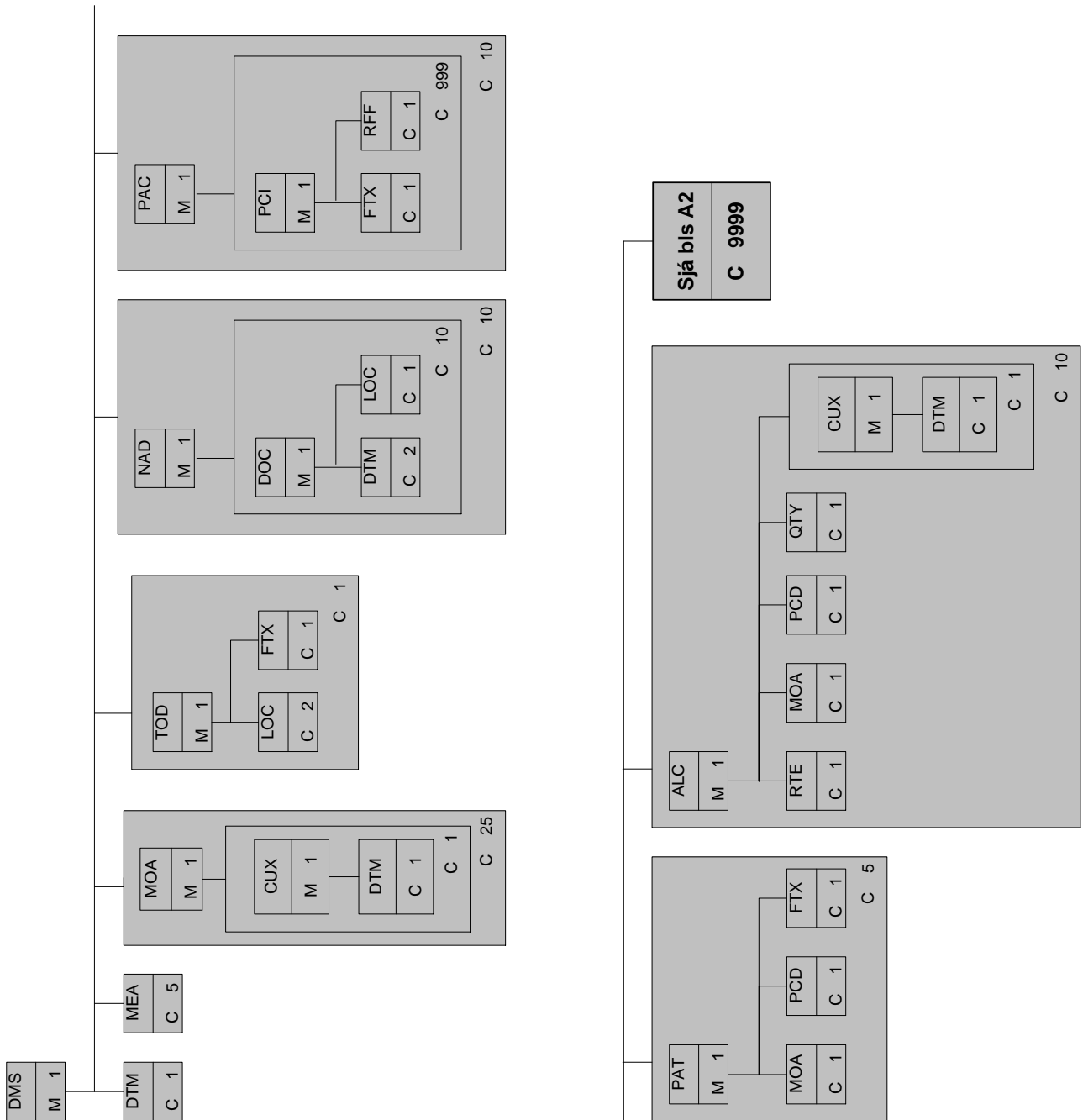
## Liðir CUSDEC í stafrófsröð

ALC ALLOWANCE OR CHARGE  
AUT AUTHENTICATION  
BGM BEGINNING OF MESSAGE  
CNT CONTROL TOTAL  
COM COMMUNICATION CONTACT  
CST CUSTOMS STATUS OF GOODS  
CTA CONTACT INFORMATION  
CUX CURRENCIES  
DMS DOCUMENT/MESSAGE SUMMARY  
DOC DOCUMENT/MESSAGE DETAILS  
DTM DATE/TIME/PERIOD  
EQD EQUIPMENT DETAILS  
FII FINANCIAL INSTITUTION INFORMATION  
FTX FREE TEXT  
GDS NATURE OF CARGO  
GIN GOODS IDENTITY NUMBER  
GIR RELATED IDENTIFICATION NUMBERS  
GIS GENERAL INDICATOR  
IMD ITEM DESCRIPTION  
LIN LINE ITEM  
LOC PLACE/LOCATION IDENTIFICATION  
MEA MEASUREMENTS  
MOA MONETARY AMOUNT  
NAD NAME AND ADDRESS  
PAC PACKAGE  
PAT PAYMENT TERMS BASIS  
PCD PERCENTAGE DETAILS  
PCI PACKAGE IDENTIFICATION  
PIA ADDITIONAL PRODUCT ID.  
PRI PRICE DETAILS  
QTY QUANTITY  
QVR QUANTITY VARIANCES  
RFF REFERENCE  
RTE RATE DETAILS  
SEL SEAL NUMBER  
TAX DUTY/TAX/FEE DETAILS  
TDT DETAILS OF TRANSPORT  
TOD TERMS OF DELIVERY  
TPL TRANSPORT PLACEMENT  
UNH MESSAGE HEADER  
UNS SECTION CONTROL  
UNT MESSAGE TRAILER

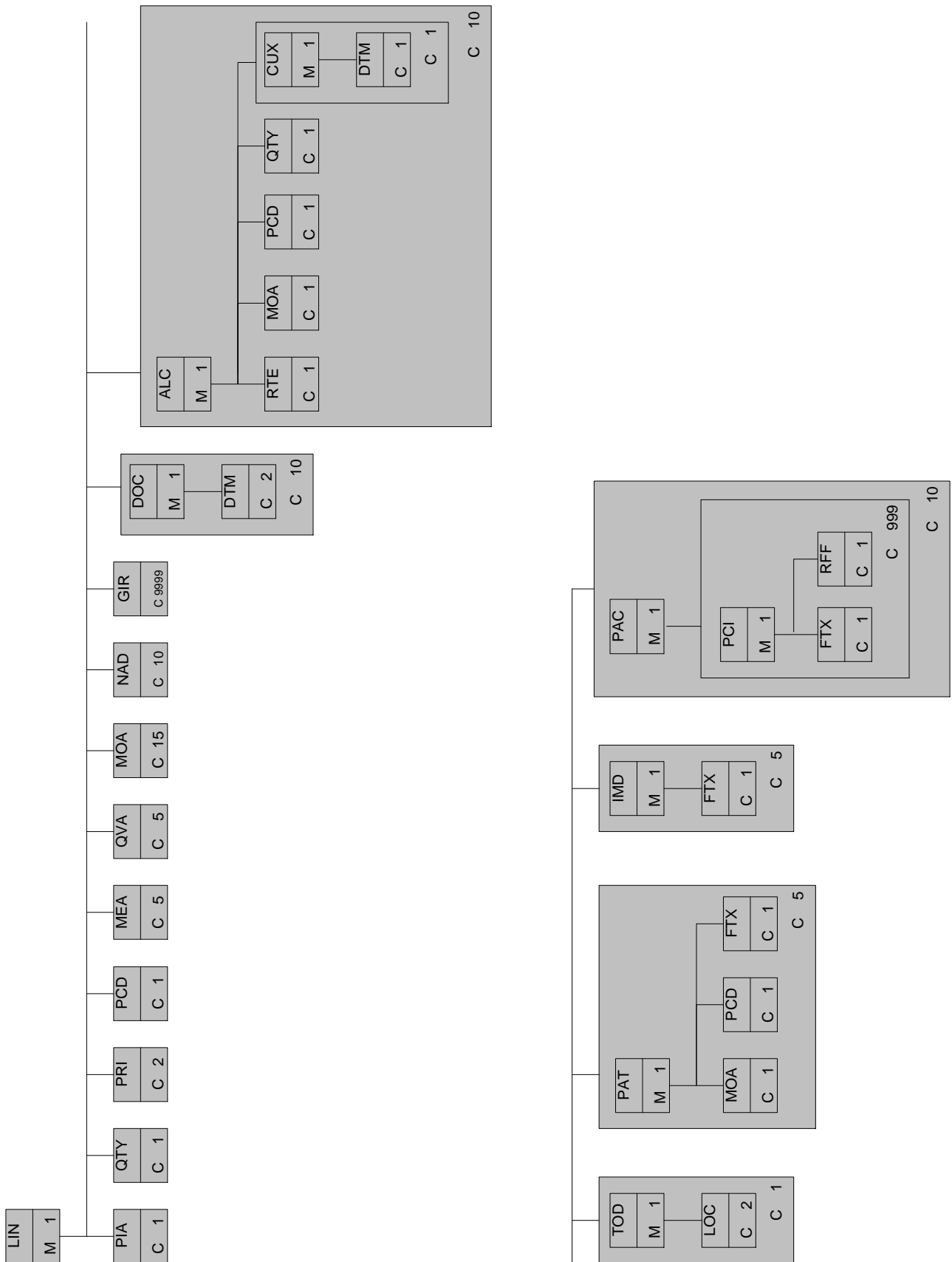
**Þvottasnúra**



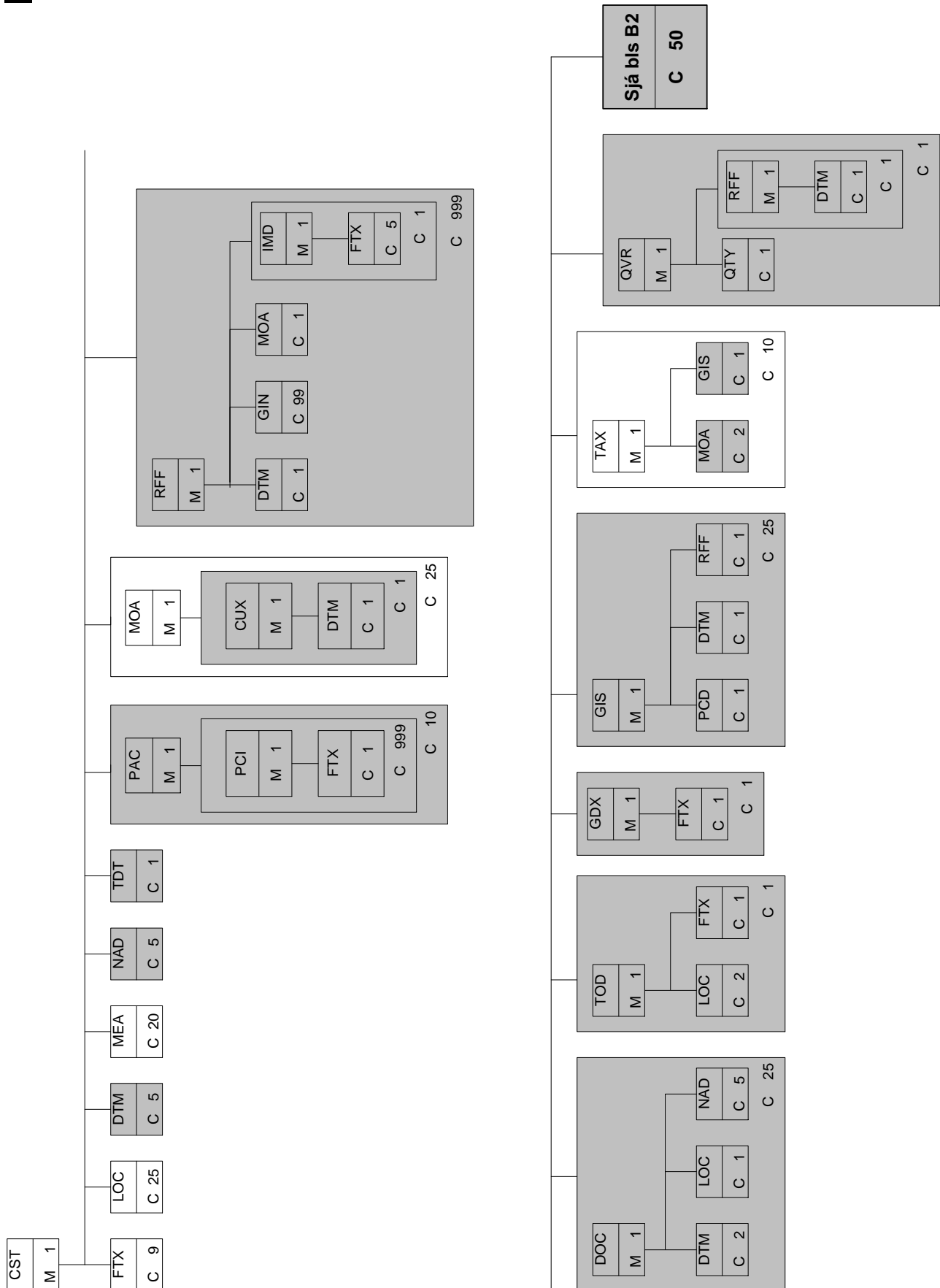
**A1**

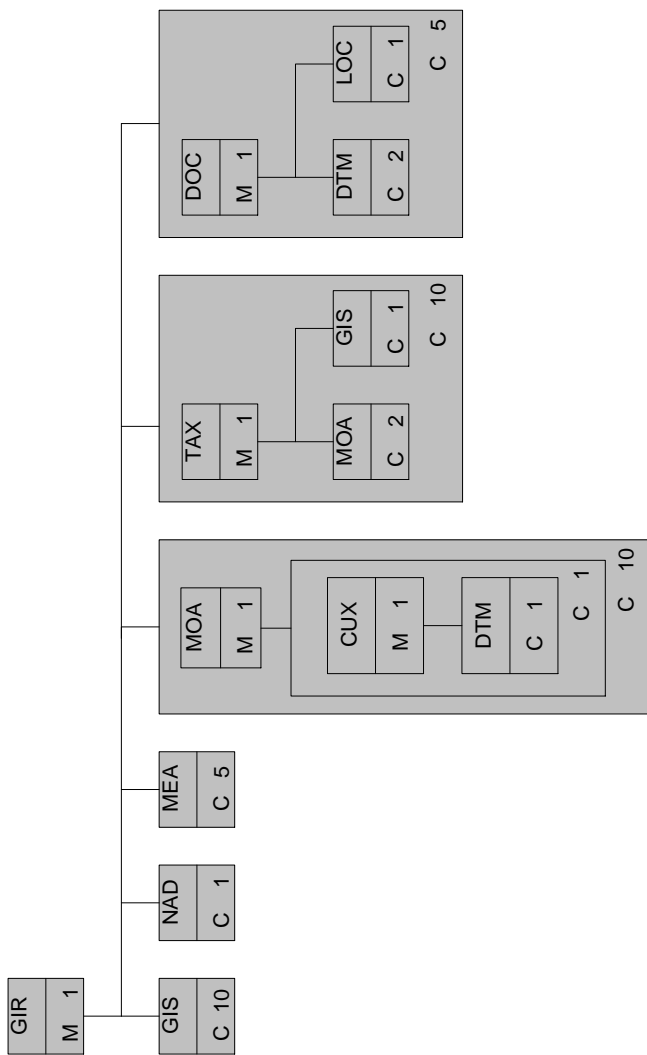


A2



**B1**



**B2**



## Lýsing liða

Í þessum kafla eru sýndir allir liðir skeytisins. Þeir liðir sem ekki eru notaðir eru skyggðir og sama gildir um þau gagnastök sem ekki eru notuð. Þennan hluta er gott að lesa með yfirlitinu yfir uppbygginguna og þvottasnúruyfirlitinu, til þess að sjá samhengi hlutanna.

<b>UNH - M 1 - MESSAGE HEADER</b>			
<i>Function : To head, identify and specify a message.</i>			
0062 MESSAGE REFERENCE NUMBER	M	an..14	Einkvæmt raðnúmer skeytis innan sendingar, gefið af SMT-þýðanda eða hugbúnaði tengdum honum. Tilvísunarnúmer skal vera það sama og í 0062 í UNT skeytahlutanum.
S009 MESSAGE IDENTIFIER	M		
0065 Message type identifier	M	an..6	*CUSDEC=Tollskýrsla
0052 Message version number	M	an..3	*D
0054 Message release number	M	an..3	*96A = Edifact directory D.96A
0051 Controlling agency, coded	M	an..2	*UN Útgefið af: UN=Sameinuðu þjóðirnar
0057 Association assigned code	C	an..6	
0068 COMMON ACCESS REFERENCE	C	an..35	
S010 STATUS OF THE TRANSFER	C		
0070 Sequence message transfer number	M	n..2	
0073 First/last sequence message transfer indic.	C	a1	

**BGM - M 1 - BEGINNING OF MESSAGE***Function : To specify message name and function.*

C002 DOCUMENT/MESSAGE NAME	C		
1001 Document/message name, coded	C	an..3	*929 = Innflutningstollskýrsla (Customs declaration for importation)
1131 Code list qualifier	C	an..3	
3055 Code list resp. agency, coded	C	an..3	
1000 Document/message name	C	an..35	
1004 DOCUMENT/MESSAGE NUMBER	C	an..35	Sendingarnúmer skv. farmskrá. Sbr. reitur nr. 9 á aðflutningsskýrslu. Vartölu sendingarnúmers skal sleppa í skeytinu.
1225 MESSAGE FUNCTION, CODED	C	an..3	*9 = Upprunalegt (þ.e. ný tollskýrsla)
4343 RESPONSE TYPE, CODED	C	an..3	

**Skýringar:**

1225 - Með 9 = Upprunalegt, er átt við að um venjulega sendingu tollskýrslu er að ræða. Þessi kóði er alltaf notaður.

**LOC - C 99 - PLACE/LOCATION IDENTIFICATION**

*Function :To identify a place or location relevant to the entire message. For example, port of loading, office of entry, etc.*

3227 PLACE/LOCATION QUALIFIER	M	an..3	*40 = Viðskiptaland (Country of trading) Tveggja stafa kóði, sbr. reitur nr. 8 á aðflutningsskýrslu. Sjá leiðbeiningar tollyfirvalda. *18 = Vörugeymsla, sbr. reitur nr. 13 á aðflutningsskýrslu. Dæmi: SUND1, FLUGFRAKT, HOLTAGARÐ
C517 LOCATION IDENTIFICATION	C		
3225 Place/location identification	C	an..25	Kóði lands (2 stafir) ef 3227 = 40
1131 Code list qualifier	C	an..3	
3055 Code list responsible agency, coded	C	an..3	*5 = ISO ef 3227 = 40 *159 = Tollyfirvöld á Íslandi ef 3227 = 18
3224 Place/location	C	an..17	Nafn vörugeymslu (mest 10 stafir) ef 3227 = 18
C519 RELATED LOCATION ONE ID	C		
3223 Related place/location one identification	C	an..25	
1131 Code list qualifier	C	an..3	
3055 Code list responsible agency, coded	C	an..3	
3222 Related place/location one	C	an..70	
C553 RELATED LOCATION TWO ID	C		
3233 Related place/location two identification	C	an..25	
1131 Code list qualifier	C	an..3	
3055 Code list responsible agency, coded	C	an..3	
3232 Related place/location two	C	an..70	
5479 RELATION, CODED	C	an..3	

**DTM - C 15 - DATE/TIME PERIOD**

*Function : To identify dates, times or periods relevant to the whole message. For example, actual date of arrival, elected date of presentation, etc.*

C507	DATE/TIME/PERIOD	C		
2005	Date/time/period qualifier	M	an..3	*137 = Dagsetning skeytis
2380	Date/time/period	M	an..35	Dagsetning
2379	Date/time/period fmt qualifier	M	an..3	*102 = ÖÖÁÁMMDD *203 = ÖÖÁÁMMDDKKMM

**Skýringar:**

**GIS - C 25 - GENERAL INDICATOR**

*Function :To identify the various indicators required by a customs system. For example, special programs, release certification, duty free eligibility under GSP, etc.*

C529 PROCESSING INDICATOR	M		
7365 Processing indicator, coded	M	an..3	*23 = Innflutningur (skeytið er vegna innflutnings). Annað, sjá leiðbeiningar tollyfirvalda.
1131 Code list qualifier	C	an..3	*109 = Listi kóða yfir tegundir afgreiðslu hjá tollyfirvöldum (Customs indicator), sbr. reitur nr. 1, miðhluti, á aðflutningsskýrslu. Einnig ef miðlari sendir skeytið þá má einnig koma gjaldfærslubeiðni hér (GI), sbr. fremsti hluti reitar nr. 1 á aðflutningsskýrslu.
3055 Code list resp. agency, coded	C	an..3	*159 = Tollyfirvöld á Íslandi
7187 Process type identification	C	an..17	

**Skýringar:**

Þessi liður (kódi 23) skal alltaf koma fyrir, til að tilgreina hvort um innflutning, útflutning eða umflutning er að ræða.

**MEA - C 5 - MEASUREMENTS**

*Function : To identify various measurement factors where these are required for the whole declaration (message).*

6311 MEASUREMENT APPLICATION QUALIFIER	M	an..3	*AAE = Mæling
C502 MEASUREMENT DETAILS	C		
6313 Measurement dimension, coded	C	an..3	*G = Brúttóþyngd
6321 Measurement significance, coded	C	an..3	
6155 Measurement attribute, coded	C	an..3	
C174 VALUE/RANGE	C		
6411 Measure unit qualifier	M	an..3	*KGM = Kílógrömm
6314 Measurement value	C	n..18	Brúttóþyngdin í heilum kílógrömmum, sbr. reitur nr. 12 á aðflutningskýrslu.
6162 Range minimum	C	n..18	
6152 Range maximum	C	n..18	
7383 SURFACE/LAYER INDICATOR, CODED	C	an..3	

**Skýringar:**

**RFF-DTM-SG2 - C 99 - Reference loop**

A group of segments identifying various references, manifest quantities and package identities relevant to the whole message.

**RFF - M 1 - REFERENCE**

*Function : To identify the various references relevant to the whole message.*

C506 REFERENCE	M		
1153 Referece qualifier	M	an..3	*ABA = Nr. ákvörðunarreglu tollverðs (Customs valuation decision no.) *ABQ = Tilvísunarnúmer SMT-leyfishafa ef innflytjandi *AAY = Tilvísunarnúmer SMT-leyfishafa ef miðlari (Carrier's agent reference number) *AWB = Flugfarmbréf (Air waybill no.) *BM = Farmbréf skip (Bill of lading no.) *CW = Viðtökunr. bögguls (Package number) *IV = Nr. vörureikninga (Invoice number) *VT = Fast skráningarnúmer ökutækja *ZZ = Greiðslumáti í banka
1154 Reference number	C	an..35	
1156 Line number	C	an..6	
4000 Reference version number	C	an..35	

**Skýringar:**

Skýring á 1154 í tengslum við kóða fyrir 1153:

**1153 = ABA = Nr. ákvörðunarreglu tollverðs (Customs valuation decision no.)**

Verðmætisýfirlýsing (Vy-lykillinn), sbr. reitur nr. 5 á aðflutningsskýrslu. Númerið er 1 stafur og getur verið á bilinu 1 - 6, sjá leiðbeiningar tollyfirvalda.

**1153 = ABQ - Tilvísunarnúmer SMT-leyfishafa (þegar hann er innflytjandi sjálfur)**

Tilvísunarnúmer þeirrar aðflutningsskýrslu og fylgiskjala hennar í bókhaldi innflytjanda, sem CUSDEC-skeytið tekur til.

Númerið getur verið allt að 14 stafir og skal vera einkvæmt. Öll tollskjöl yfir tiltekna sendingu skulu geymd saman og bera sama tilvísunarnúmerið. Gildir þegar innflytjandi sendir CUSDEC skeytið.

**1153 = AAY = Tilvísunarnúmer SMT-leyfishafa (þegar um miðlara er að ræða) (Carrier's agent reference number)**

Tilvísunarnúmer miðlara. Samskonar númer og í ABQ og kemur í stað ABQ þegar miðlari sendir CUSDEC skeytið.

**1153 = AWB = Flugfarmbréf (Air waybill no.) eða BM = Farmbréf skip (Bill of lading no.)**

Sbr. reitur nr. 11 á aðflutningsskýrslu. Farmskráarnúmer skipsfarmbréfs (BM) er 4 stafir, en flugfarmbréfs (AWB) 11 stafir.

Ekki þarf að fylla út þetta svæði ef sendingarnúmer, sbr. reit 9 í aðflutningsskýrslu, byrjar á B (tollskýrslur sem eru úttektir úr tollvörugæmslum og frísvæðum og sendar eru af miðlurum) eða P (vörusendingar í gegnum póstin).

**1153 = CW = Viðtökunúmer böggla (Package number) á pósthús.**

Viðtökunúmer böggla, smápakka eða bréfs, sem aðflutningsskýrsla yfir vörusendingu með pósti nær yfir. Reitur fyrir þessi viðtökunúmer er ekki á aðflutningsskýrslu á pappír.

**1153 = IV = Nr. vörureikninga (Invoice number)**

Númer vörureikninga, sem geta verið einn eða fleiri, eftir fjölda þeirra vörureikninga frá hinum erlenda seljanda, sem fylgja aðflutningsskýrslu. Getur verið allt að 11 stafir að lengd. Þetta svæði er ekki á skriflegri aðflutningsskýrslu. Ef um er að ræða tollskýrslu miðlara, sem er úttekt úr tollvörugæmslu eða frísvæði þá koma hér sérstök tilvísunarnúmer í upphaflegar tollskýrslur í stað vörureikningsnúmera.

**1153 = VT = Fast skráningarnúmer ökutækis**

Fastnúmer frá Skráningarstofu. 2 bókstafir og 3 tölustafir. Sbr. reitur nr. 15 á aðflutningsskýrslu.

**1153 = ZZ = Greiðslumáti í banka**

Greiðslumáti, þ.e. hvernig varan er greidd hinum erlenda seljanda. Sbr. reitur nr. 20 á aðflutningsskýrslu: aftasti hluti. Númerið er einn stafur á lengd á bilinu 0 - 9.



**DOC-DTM-LOC - C 10 - Document loop**

A group of segments identifying documentary requirements where they are needed as supporting information for the entire message.

**DOC - M 1 - DOCUMENT/MESSAGE DETAILS**

*Function : To indicate a specific document required as supporting information for the entire message.*

C002 DOCUMENT/MESSAGE NAME	M		
1001 Document/message name, coded	C	an..3	Kóði skjals. Leyfi/vottorð (fylgiskjöl) aðflutningsskýrslu, sbr. reitur nr. 14 á aðflutningsskýrslu Sjá leiðbeiningar tollyfirvalda.
1131 Code list qualifier	C	an..3	
3055 Code list resp. agency, coded	C	an..3	
1000 Document/message name	C	an..35	
C503 DOCUMENT/MESSAGE DETAILS			
1004 Document/message number	C	an..35	Númer/tílvísun skjals, sbr. reitur nr. 14 á aðflutningsskýrslu.
1373 Document/message status, coded	C	an..3	
1366 Document/message source	C	an..35	
3453 Language, coded	C	an..3	
3153 COMM. CHANNEL ID, CODED	C	an..3	
1220 NUMBER OF COPIES OF DOC. REQD.	C	n..2	
1218 NUMBER OF ORIGINALS OF DOC REQD	C	n..2	

**Skýringar:**

## NAD-RFF-CTA-COM - C 10 - Name and address loop

A group of segments identifying the parties relevant to the whole message, with their related references, contacts, and communication numbers.

### NAD - M 1 - NAME AND ADDRESS

*Function : To identify the parties relevant to the entire message. For example importer, ultimate consignee, etc.*

3035 PARTY QUALIFIER	M	an..3	*IM = Innflytjandi (Importer) *AE = Umboðsaðili innflytjanda; miðlari
C082 PARTY IDENTIFICATION DETAILS	C		
3039 Party id identification	M	an..17	Íslensk kennitala (10 stafir)
1131 Code list qualifier	C	an..3	
3055 Code list resp. agency, coded	C	an..3	*ZZZ=Íslensk kennitala notuð
C058 NAME AND ADDRESS	C		
3124 Name and address line	M	an..35	Nafn
3124 Name and address line	C	an..35	Heimili
3124 Name and address line	C	an..35	Heimili
3124 Name and address line	C	an..35	
3124 Name and address line	C	an..35	
C080 PARTY NAME	C		
3036 Party name	M	an..35	
3036 Party name	C	an..35	
3036 Party name	C	an..35	
3036 Party name	C	an..35	
3036 Party name	C	an..35	
3045 Party name format, coded	C	an..3	

C059 STREET	C		
3042 Street and number/P.O. Box	M	an..35	
3042 Street and number/P.O. Box	C	an..35	
3042 Street and number/P.O. Box	C	an..35	
3164 CITY NAME	C	an..35	
3229 COUNTRY SUB-ENTITY IDENTIFIC.	C	an..9	
3251 POSTCODE IDENTIFICATION	C	an..9	
3207 COUNTRY, CODED	C	an..3	

**Skýringar:**

Nafn og heimili í C058 skal ekki nota nema í pósttollskýrslu, ef um er að ræða aðila sem ekki hafa íslenska kennitölu. Þá er sett 0000000000 í kennitölu og nafn og heimilisfang fyllt út.

**RFF - C 10 – REFERENCE**

*Function : To identify references relating to the party specified within the group. For example, a special mailing request number for refunds relating to the customs transaction.*

C506 REFERENCE	M		
1153 Referece qualifier	M	an..3	*VA = Virðisaukaskattsúmer innflytjanda/leyfishafa
1154 Reference number	C	an..35	Virðisaukaskattsúmer, 5 stafir á lengd, sbr. reitur nr. 10 á aðflutningsskýrslu.
1156 Line number	C	an..6	
4000 Reference version number	C	an..35	

**Skýringar:**

Virðisaukaskattsúmerið verður að eiga við kennitölu innflytjanda/leyfishafa eða umboðsaðila þegar hann er sá sem tollafgreiðir og verður auk þess að vera í gildi.

**Virðisaukaskattsúmerið skal því alltaf eiga við kennitölu þess aðila, sem aðflutningsgjöld verða skuldfærð á við tollafgreiðslu.**

## TOD-LOC-FTX - C 1 - Terms of delivery loop

A group of segments identifying the terms of delivery pertinent to the entire message.

### TOD - M 1 - TERMS OF DELIVERY

*Function : To identify terms of delivery, relevant to the entire message, in a coded format.*

4055 TERMS OF DELIVERY FUNCTION, CODED	C	an..3	Afhendingarskilmálar sbr. UN/ECE recommendation nr. 5. Kóðar skv. Incoterms 1990, t.d. 'CIF', 'FOB'. Sbr. fremri hluti reits nr. 19 á aðflutningskýrslu.
4215 TRANSPORT CHARGES METHOD OF PAYMENT, CODED	C	an..3	
C100 TERMS OF DELIVERY	C		
4053 Terms of delivery, coded	C	an..3	
1131 Code list qualifier	C	an..3	
3055 Code list responsible agency, coded	C	an..3	
4052 Terms of delivery	C	an..70	
4052 Terms of delivery	C	an..70	

#### Skýringar:

**LOC - C 2 - PLACE/LOCATION IDENTIFICATION**

*Function :To identify a place or location relevant to the entire message. For example, port of loading, office of entry, etc.*

3227 PLACE/LOCATION QUALIFIER	M	an..3	*1 = Staður afhendingarskilmála (Place of terms of delivery)
C517 LOCATION IDENTIFICATION	C		
3225 Place/location identification	C	an..25	Nafn staðar
1131 Code list qualifier	C	an..3	
3055 Code list responsible agency, coded	C	an..3	
3224 Place/location	C	an..17	Nafn staðar (mest 15 stafir), sbr. aftari hluti reitar nr. 19 í skýrslu.
C519 RELATED LOCATION ONE ID	C		
3223 Related place/location one identification	C	an..25	
1131 Code list qualifier	C	an..3	
3055 Code list responsible agency, coded	C	an..3	
3222 Related place/location one	C	an..70	
C553 RELATED LOCATION TWO ID	C		
3233 Related place/location two identification	C	an..25	
1131 Code list qualifier	C	an..3	
3055 Code list responsible agency, coded	C	an..3	
3232 Related place/location two	C	an..70	
5479 RELATION, CODED	C	an..3	

## MOA-SG9 - C 25 - Monetary amount loop

A group of segments identifying monetary amounts, currencies and their exchange rates, when required for the whole declaration.

### MOA - M 1 - MONETARY AMOUNT

*Function : To identify a monetary function and up to five monetary amounts.*

C516 MONETARY AMOUNT	M		
5025 Monetary amount amount type qualifier	M	an..3	*63 = FOB verð, innkaupsverð sbr. reitur nr. 22 á aðflutningsskýrslu *144 = Flutningskostnaður, sbr. reitur nr. 24 á aðflutningsskýrslu *81 = Annar kostnaður, sbr. reitur nr. 25 á aðflutningsskýrslu *70 = Vátrygging, sbr. reitur nr. 26 á aðflutningsskýrslu *39 = Heildarupphæð reiknings, sbr. reitur nr. 20 á aðflutningsskýrslu
5004 Monetary amount	C	n..18	Upphæðin í viðkomandi mynt. Hámark 13 stafir, komma meðtalin
6345 Currency, coded	C	an..3	Mynt kóði, skv. ISO 4217 alpha 3 (dæmi DKK = danskar krónur)
6343 Currency qualifier	C	an..3	
4405 Status, coded	C	an..3	

#### Skýringar:

Tvær upphæðir mega vera fyrir flutningskostnað (144) og annan kostnað (81). Þ.e. tvítaka má liði fyrir þessar upphæðir. Flutningskostnaður gæti t.d. verið að hluta til í einni mynt og að hluta til í annarri.

## Detail Section

This section provides information relating to commercial documentation and customs requirements for the clearance of goods.

### UNS - M 1 - SECTION CONTROL

*Function : A service segment placed at the beginning of the detail section to indicate the beginning of that section.*

0081 Section identifier	M	a1	*D
-------------------------	---	----	----

#### Skýringar:

Þessi liður aðskilur upplýsingar í haus aðflutningsskýrslu og upplýsingar í línunum fyrir hvert tollskrárnúmer.



## CST-FTX-LOC-DTM-MEA-NAD-TDT-SG31-SG33-SG35-SG37-SG38-SG39-SG40-SG41-SG42-SG44 - C 9999 - Item detail loop

A group of segments identifying detailed information for a single customs item of a customs declaration.

### CST - M 1 - CUSTOMS STATUS OF GOODS

*Function : To identify the customs tariff of the goods, their required treatment and, where these are different to the header information, the type of declaration and the current status of the goods.*

1496 GOODS ITEM NUMBER	C	n..5	Númer línu á aðflutningsskýrslu
C246 CUSTOMS IDENTITY CODES	C		
7361 Customs code identification	M	an..18	Tollskrárnúmer skv. tollskrá, 8 stafir, reitur nr. 28 á aðflutningsskýrslu.
1131 Code list qualifier	C	an..3	*169 = Harmonized system
3055 Code list responsible agency, coded	C	an..3	*159 = Tollyfirvöld á Íslandi
C246 CUSTOMS IDENTITY CODES	C		
7361 Customs code identification	M	an..18	
1131 Code list qualifier	C	an..3	
3055 Code list responsible agency, coded	C	an..3	
C246 CUSTOMS IDENTITY CODES	C		
7361 Customs code identification	M	an..18	
1131 Code list qualifier	C	an..3	
3055 Code list responsible agency, coded	C	an..3	
C246 CUSTOMS IDENTITY CODES	C		
7361 Customs code identification	M	an..18	

1131 Code list qualifier	C	an..3	
3055 Code list responsible agency, coded	C	an..3	
C246 CUSTOMS IDENTITY CODES	C		
7361 Customs code identification	M	an..18	
1131 Code list qualifier	C	an..3	
3055 Code list responsible agency, coded	C	an..3	

**Skýringar:**

**FTX - C 1 - FREE TEXT***Function : To identify the customs description in narrative form.*

4451 TEXT SUBJECT QUALIFIER	M	an..3	*AAA = Vörulýsing
4453 TEXT FUNCTION, CODED	C	an..3	
C107 TEXT REFERENCE	C		
4441 Free text, coded	M	an..3	
1131 Code list qualifier	C	an..3	
3055 Cde list resp. agency, coded	C	an..3	
C108 TEXT LITERAL	C		
4440 Free text	M	an..70	Vörulýsing, hámark 30 stafir sbr. reitur nr. 29 á aðflutningsskýrslu.
4440 Free text	C	an..70	
4440 Free text	C	an..70	
4440 Free text	C	an..70	
4440 Free text	C	an..70	
3453 LANGUAGE, CODED	C	an..3	

**Skýringar:**

**LOC - C 25 – PLACE/LOCATION IDENTIFICATION**

*Function : To identify the places relevant to a customs item. For example, country of origin, country of export, etc.*

3227 PLACE/LOCATION QUALIFIER	M	an..3	*27 = Upprunaland. Landakóði skv. ISO staðli. Sjá fylgiskjal tollyfirvalda.
C517 LOCATION IDENTIFICATION	C		
3225 Place/location identification	C	an..25	
1131 Code list qualifier	C	an..3	Upprunaland (reitur nr. 34 á aðflutningskýrslu)
3055 Code list responsible agency, coded	C	an..3	
3224 Place/location	C	an..17	*5 = ISO
C519 RELATED LOCATION ONE ID.	C		
3223 Related place/location one identification	C	an..25	
1131 Code list qualifier	C	an..3	
3055 Code list responsible agency, coded	C	an..3	
3222 Related place/location one	C	an..70	
C553 RELATED LOCATION TWO ID.	C		
3233 Related place/location two identification	C	an..25	
1131 Code list qualifier	C	an..3	
3055 Code list responsible agency, coded	C	an..3	
3232 Related place/location two	C	an..70	
5479 RELATION, CODED	C	an..3	

**Skýringar:**

**MEA - C 20 – MEASUREMENTS**

Function : To identify the necessary statistical information requirements related to a tariff number. For example, net weights, volumes, etc.

6311 MEASUREMENT APPLICATION QUALIFIER	M	an..3	*AAE = Mæling *AAG = Prósentá alkóhóls skv. rúmmáli *CT = Talning *WT= Þyngd (umbúða)
C502 MEASUREMENT DETAILS	C		
6313 Measurement dimension, coded	C	an..3	*AAF = Nettóþyngd án umbúða (6311 = AAE) *AAX = Rúmmál (6311 = AAE) *ZZZ = Samkvæmt lista tollstjóra
6321 Measurement significance, coded	C	an..3	
6155 Measurement attribute, coded	C	an..3	
C174 VALUE/RANGE	C		
6411 Measure unit qualifier	M	an..3	*ASV = Styrkleikaprósentá áfengis skv. rúmmáli (6311 = AAG) *KGM = Kílógrömm (6311 = AAE og 6313 = AAF) *LTR = Lítrar (6311 = AAE og 6313 = AAX) *NMB = Fjöldi (6311 = CT) *PP1 = Þyngd pappambúða, <b>rauntala</b> (6311 = WT og 6313 = ZZZ) *PP2 = Þyngd pappambúða, <b>áætlun</b> (6311 = WT og 6313 = ZZZ) *PPX = Vara ekki í pappá/pappírsumbúðum (6311 = WT og 6313 = ZZZ) *PL1 = Þyngd plastumbúða, <b>rauntala</b> (6311 = WT og 6313 = ZZZ) *PL2 = Þyngd plastumbúða, <b>áætlun</b> (6311 = WT og 6313 = ZZZ) *PLX = Vara ekki í plastumbúðum (6311 = WT og 6313 = ZZZ) *SYK = Þyngd viðbætts sykurs í vöru í kg (6311 = WT og 6313 = ZZZ) *SÆT = Þyngd viðbætts sætuefnis í vöru í gr (6311 = WT og 6313 = ZZZ)

6314 Measurement value	C	n..18	
6162 Range minimum	C	n..18	
6152 Range maximum	C	n..18	
7383 SURFACE/LAYER INDICATOR, CODED	C	an..3	

**Skýringar:****Skýringar fyrir reit 6314:****Ef 6311 er AAE:****Ef 6411 er KGM:**

Nettóþyngd vöru í hverri línu í heilum kg, þ.e. í hverju tollskrárnúmeri, hámark 9 tölustafir. Sbr. reitur 31 á aðflutningsskýrslu.

**Ef 6411 er LTR:**

Lítratala vöru í hverri línu tollskrárnúmers þegar krafist er útfyllingar lítratölu, t.d vegna gjaldstofns gjalds á tollskrárnúmeri. Hámark 12 stafir, komma meðtalín. Lítratala skal uppgæfin með 2 aukastöfum. Sbr. sérstök útfylling á reit nr. 31 á aðflutningsskýrslu.

**Ef 6311 er CT:**

Einingatala, hámark 7 tölustafir. Sbr. reitur 30 á aðflutningsskýrslu.

**Ef 6311 er AAG:**

6313 er ekki notað, 6411 = ASV.

Styrkleikaprósentu áfengis skv. rúmmáli. 6314. Gefa upp með tveggja aukastafa nákvæmni. Hámark 6 stafir, komma meðtalín. Sbr. sérstök útfylling á reit nr. 30 á aðflutningsskýrslu.

**Ef 6311 er WT:**

Þyngd umbúða og viðbættis sykurs í kílógrömmum. Þyngd viðbættis sætuefnis í grömmum. Þyngd skal uppgæfin með 2 aukastöfum. Hámark 12 stafir, komma meðtalín.

Sbr. sérstök útfylling á reitum 30 og 31 á aðflutningsskýrslu. Ef vara er ekki í umbúðum eða inniheldur ekki sykur eða sætuefni skal skrá 0.00.

Komma á undan aukastöfum er táknuð með punkti (.).

**MOA-SG34 - C 25 - Monetary loop**

A group of segments identifying various monetary amounts, currencies and rates of exchange that pertain to the customs item.

**MOA - M 1 - MONETARY AMOUNT**

*Function : To identify the monetary amounts necessary for statistical and duty purposes.*

C516 MONETARY AMOUNT	M		
5025 Monetary amount amount type qualifier	M	an..3	*63 = Fob verð
5004 Monetary amount	C	n..18	Fob verð á hverja línu í viðkomandi mynt skv. reit nr. 17 á aðflutningskýrslu. Hámark 14 stafir, komma meðtalin.
6345 Currency, coded	C	an..3	
6343 Currency qualifier	C	an..3	
4405 Status, coded	C	an..3	

**Skýringar:**

Hér er ekki tilgreind mynt, þar sem mynt í MOA-lið í haus gildir fyrir línurnar líka.

**TAX-MOA-GIS - C 10 - Duty/tax/fee loop**

A group of segments identifying duties/taxes/fees and methods of payment related to a customs item.

**TAX - M 1 - DUTY/TAX/FEE DETAILS**

*Function : To identify the tax type, rate and base associated with a customs item.*

5283 DUTY/TAX/FEE FUNCTION QUALIFIER	M	an..3	*1 = Tollur skv. tollskrá
C241 DUTY/TAX/FEE TYPE	C		
5153 Duty/tax/fee type, coded	C	an..3	Tegund tolls (1 til 2 stafir, A, B eða E) sbr. tollskrá. Sbr. fremri hluti reits nr. 33 á aðflutningsskýrslu. Sjá leiðbeiningar tollyfirvalda.
1131 Code list qualifier	C	an..3	
3055 Code list responsible agency, coded	C	an..3	*159 = Tollyfirvöld á Íslandi
5152 Duty/tax/fee type	C	an..35	
C533 DUTY/TAX/FEE ACCOUNT DETAIL	C		
5289 Duty/tax/fee account identification	M	an..6	
1131 Code list qualifier	C	an..3	
3055 Code list responsible agency, coded	C	an..3	
5286 DUTY/TAX/FEE ASSESSMENT BASIS	C	an..15	
C243 DUTY/TAX/FEE DETAIL	C		
5279 Duty/tax/fee rate identification	C	an..7	
1131 Code list qualifier	C	an..3	
3055 Code list responsible agency, coded	C	an..3	
5278 Duty/tax/fee rate	C	an..17	
5273 Duty/tax/fee rate basis identification	C	an..12	



1131 Code list qualifier	C	an..3	
3055 Code list responsible agency, coded	C	an..3	
5305 DUTY/TAX/FEE CATEGORY, CODED	C	an..3	
3446 PARTY TAX IDENTIFICATION NUMBER	C	an..20	

**Skýringar:**

## Summary Section

### UNS - M 1 - SECTION CONTROL

*Function : A service segment placed at the beginning of the summary section to indicate the start of that section.*

0081 Section identifier

M

a1

\*S = Aðskilur línur fyrir hvert tollskrárnúmer frá lokaliðum skeytisins.

**CNT - C 5 - CONTROL TOTAL**

*Function : To specify control totals. For example, the number of commercial documents, the total number of customs item, values, and packages reported in the message.*

C270 CONTROL	M		
6069 Control qualifier	M	an..3	*5 = Fjöldi lína á aðflutningsskýrslu
6066 Control value	M	an..18	Fjöldi lína
6411 Measure unit qualifier	C	an..3	*NMB = Fjöldi

**Skýringar:**

**UNT - M 1 - MESSAGE TRAILER**

*Function : A service segment ending a message, giving the total number of segments in the message and the message reference number of the message.*

0074 NUMBER OF SEGMENTS IN A MESSAGE	M	n..6	Heildarfjöldi liða í skeytinu (frá og með UNH til og með UNT).
0062 INTERCHANGE CONTROL REFERENCE	M	an..14	Sama tilvísunarnúmer og 0062 í UNH.

**Dæmi um aðflutningskýrslu**

(<http://www.tollur.is/file.asp?id=3937>)